



ALDER ~ 3,484 TOTAL SQFT

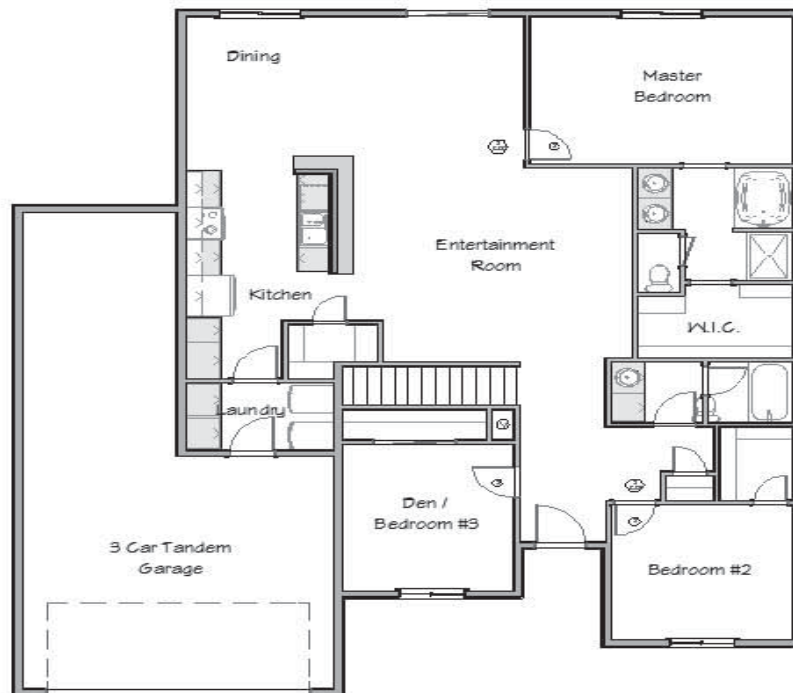
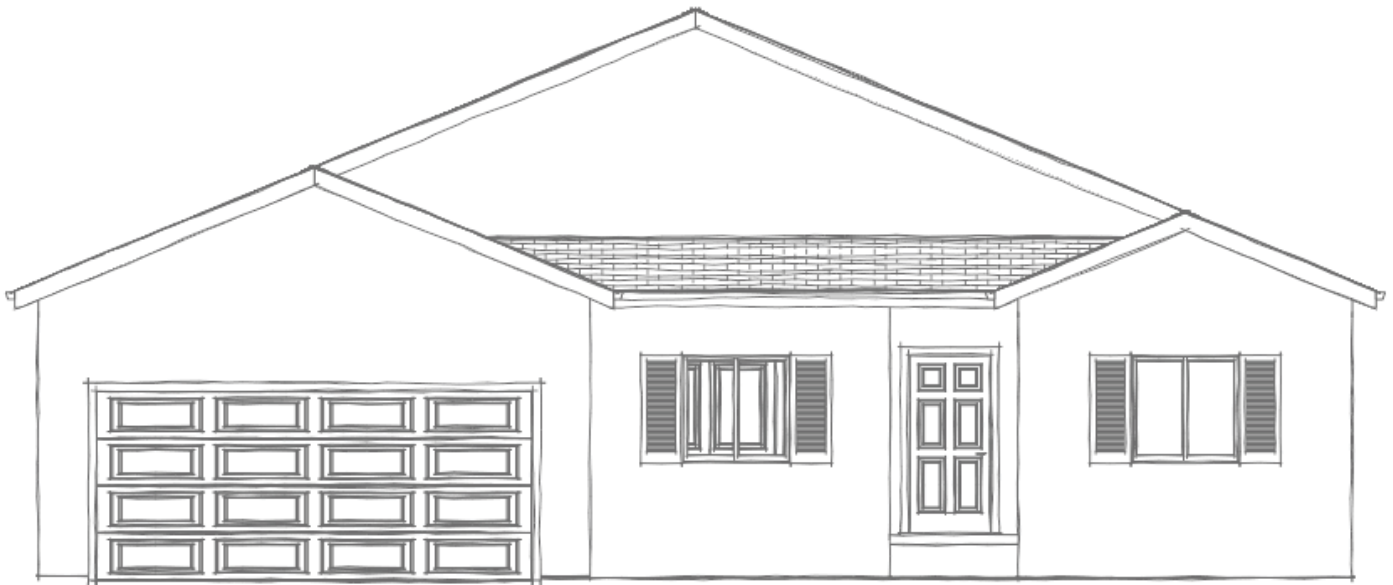
MAIN LEVEL:

1,742 sqft | 3 bed | 2 Bath | 2 or 3 car garage

BASEMENT:

1,742 sqft | possible 2 bed | 1 Bath |

PUEBLO: 719.225.1270 | SPRINGS: 719.426.2270 | MARK@SKYCREEKHOMES.COM | BRIAN@SKYCREEKHOMES.COM



Copyright 2015 Sky Creek Homes, Ltd. These floor plans are for illustrative purposes only and are subject to change without notice or obligation. Elevations and plans may demonstrate optional features and may not represent the lowest price homes in the area. Please contact us for specific information.