



GINGER CREST ~ 3,858 TOTAL SQFT

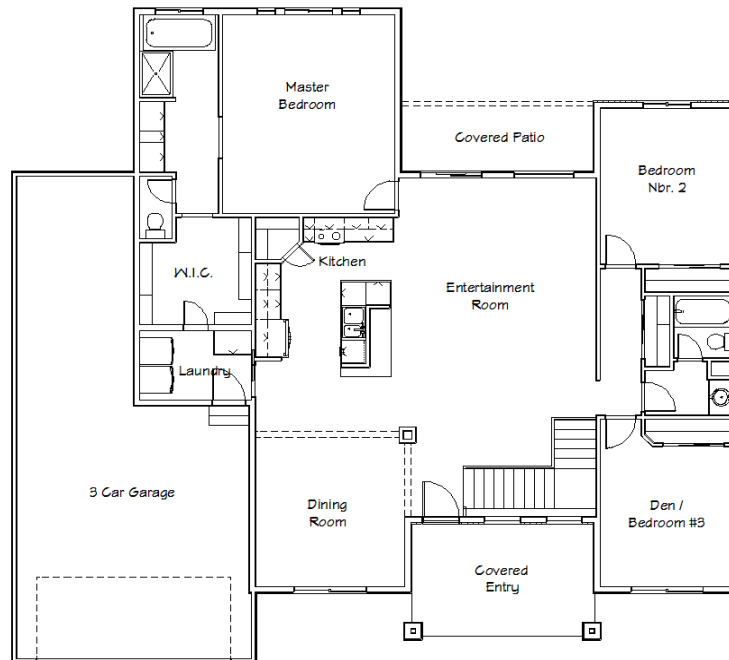
MAIN LEVEL:

1,929 sqft | 3 bed | 2 Bath | 2 or 3 car garage

BASEMENT:

1,929 sqft | possible 2 bed | 1 Bath |

PUEBLO: 719.225.1270 | SPRINGS: 719.426.2270 | MARK@SKYCREEKHOMES.COM | BRIAN@SKYCREEKHOMES.COM



Copyright 2014 Sky Creek Homes, Ltd. These floor plans are for illustrative purposes only and are subject to change without notice or obligation. Elevations and plans may demonstrate optional features and may not represent the lowest price homes in the area. Please contact us for specific information.