



## SUNFLOWER ~ 4,076 TOTAL SQFT

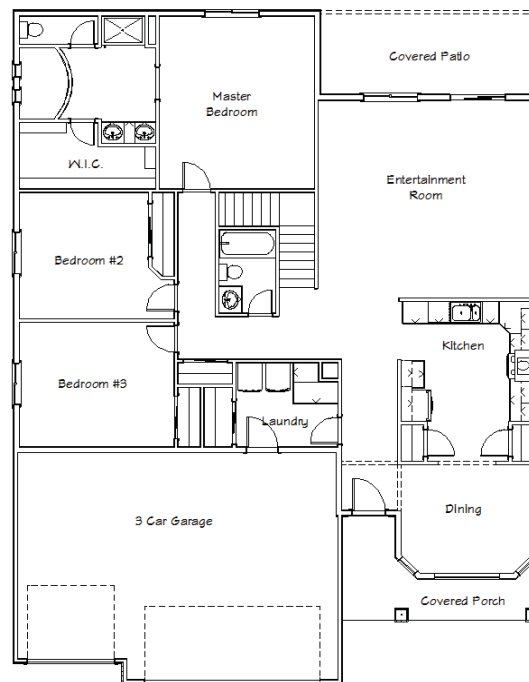
### MAIN LEVEL:

2,038 sqft | 3 bed | 2 Bath | 3 car garage

### BASEMENT:

2,038 sqft | possible 3 bed | 1 Bath |

PUEBLO: 719.225.1270 | SPRINGS: 719.426.2270 | MARK@SKYCREEKHOMES.COM | BRIAN@SKYCREEKHOMES.COM



Copyright 2014 Sky Creek Homes, Ltd. These floor plans are for illustrative purposes only and are subject to change without notice or obligation. Elevations and plans may demonstrate optional features and may not represent the lowest price homes in the area. Please contact us for specific information.